

The Three Cent Washington Principal Imperforate Color Varieties

1851



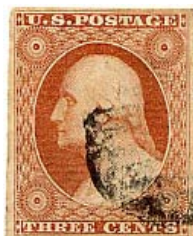
Orange Brown
Scott No. 10, 10A

1851



Experimental Orange Brown
Scott No. 11A

1852 and 1857



Yellow Brown
Scott No. 11, 11A

1852 and 1856



Brownish Carmine
Scott No. 11, 11A

1852 and 1857



Claret
Scott No. 11, 11A

Late 1852



Claret
Scott No. 11A

1852-53



Dull Red
Scott No. 11A

1853-55



Rose Red
Scott No. 11A

1853-55



Rose Red/Bright
Scott No. 11A

1854-56



Orange Red
Scott No. 11, 11A

1855-56



Yellowish Rose Red
(pale & yellowish)
Scott No. 11, 11A

1855-56



Yellowish Rose Red
(medium & deep)
Scott No. 11, 11A

1857



Rose Brown
Scott No. 11, 11A

1857



Claret/Deep
Scott No. 11, 11A

1857

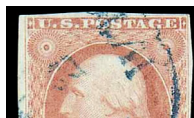


Claret/Purplish
Scott No. 11, 11A

1857



Plum
Scott No. 11, 11A



Pinkish



Copper Brown



Brownish Orange Brown



Deep Pink



Brown



Brownish Claret